



# GMT MONTHLY MEMBERSHIP PROGRESS REPORT

Results as of: 4/30/2018

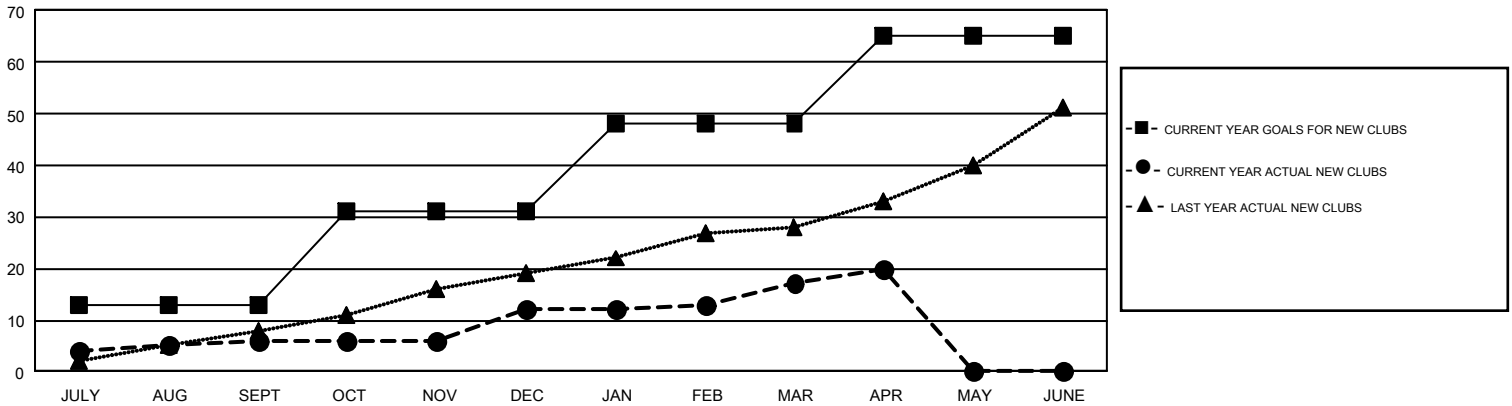
## GMT Constitutional Area 1, Group H

GMT: HOWARD HUDSON

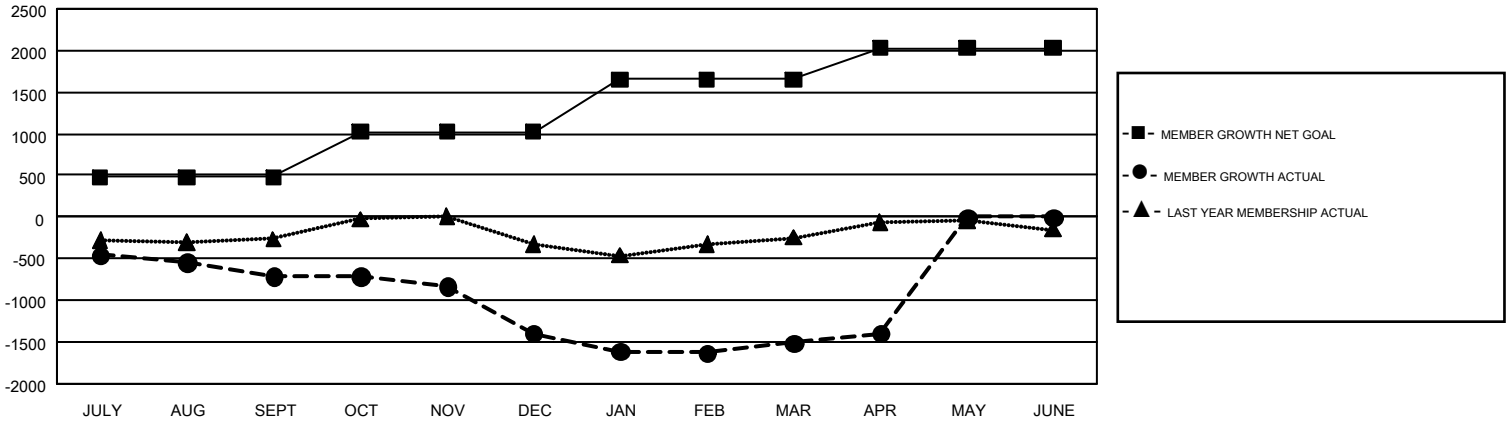
REPORT DOES NOT INCLUDE CLUBS IN UNDISTRICTED AREAS.

| Clubs                 |               |           |               | Members               |                        |                      |  |
|-----------------------|---------------|-----------|---------------|-----------------------|------------------------|----------------------|--|
| RESULTS FOR 2017-2018 |               |           |               | RESULTS FOR 2017-2018 |                        |                      |  |
| QUARTER               | NEW CLUB GOAL | NEW CLUBS | DROPPED CLUBS | QUARTER               | MEMBER GROWTH NET GOAL | MEMBER GROWTH ACTUAL | DROPPED MEMBERS ACTUAL (including transfers) |
| JULY/AUG/SEPT         | 13            | 6         | 8             | JULY/AUG/SEPT         | 481                    | 1,446                | 1,923  |
| OCT/NOV/DEC           | 18            | 6         | 26            | OCT/NOV/DEC           | 541                    | 1,130                | 1,731  |
| JAN/FEB/MAR           | 17            | 5         | 8             | JAN/FEB/MAR           | 629                    | 1,400                | 1,355  |
| APR/MAY/JUNE          | 17            | 3         | 2             | APR/MAY/JUNE          | 379                    | 480                  | 321  |

GOALS AND ACTUAL NEW CLUBS CUMULATIVE



GOALS AND ACTUAL MEMBERS CUMULATIVE



|                        |  |   |                 |
|------------------------|--|---|-----------------|
| DROPPED CLUBS: 44      | 909 CLUBS OF 1,440 ADDED 1 OR MORE NEW MEMBERS | <u>GENDER DISTRIBUTION</u>                                |                 |
| <u>DROPPED MEMBERS</u> |  | MALE  | 23,882 (62.19%) |
| DECEASED               | 441  | FEMALE  | 14,520 (37.81%) |
| CLUB CANCELLED         | 403  | TOTAL FAMILY UNIT MEMBERS                                 | 7,810           |
| OTHER                  | 4,485  | FAMILY MEMBERS PAYING HALF DUES                           | 4,044           |
| TOTAL                  | 5,329  | <a href="#">CLICK HERE FOR CUMULATIVE MEMBERSHIP DATA</a> |                 |